

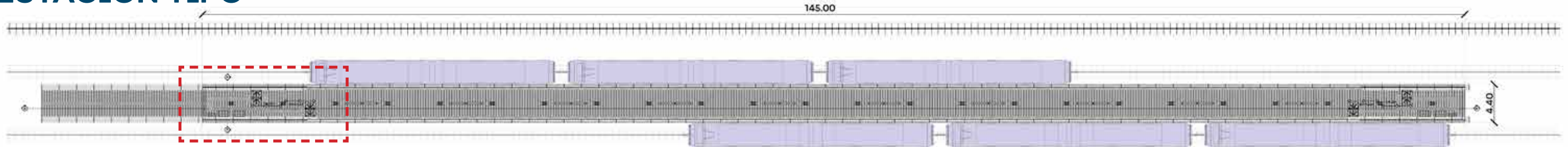
# Línea 4 del Tren Ligero de Guadalajara



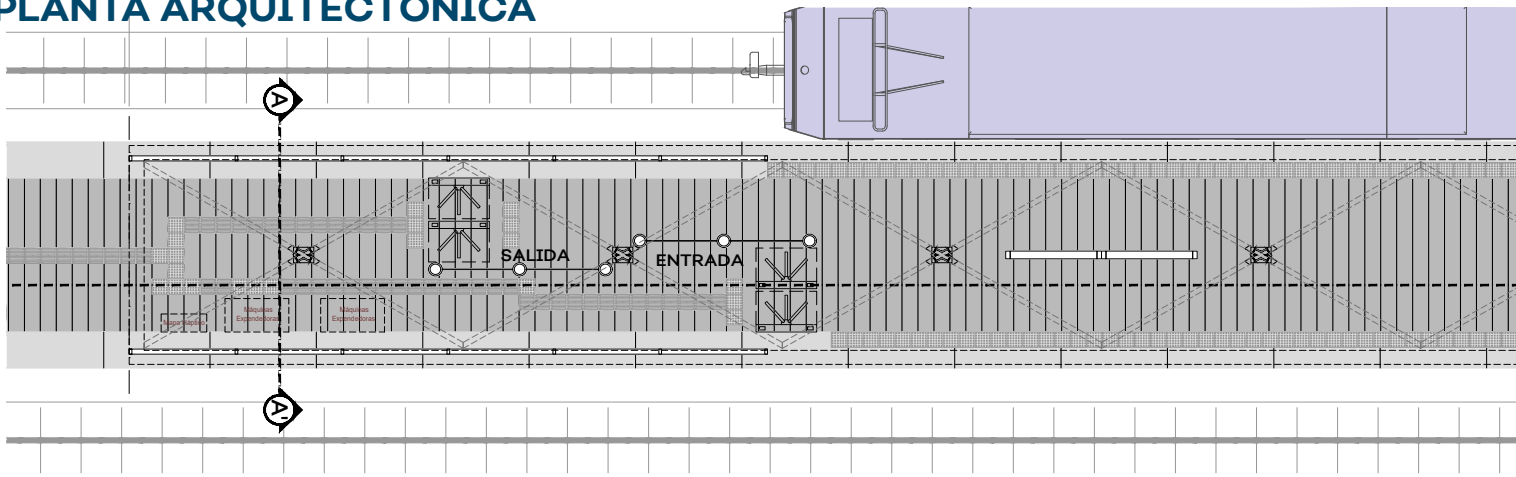
LOCALIZACIÓN



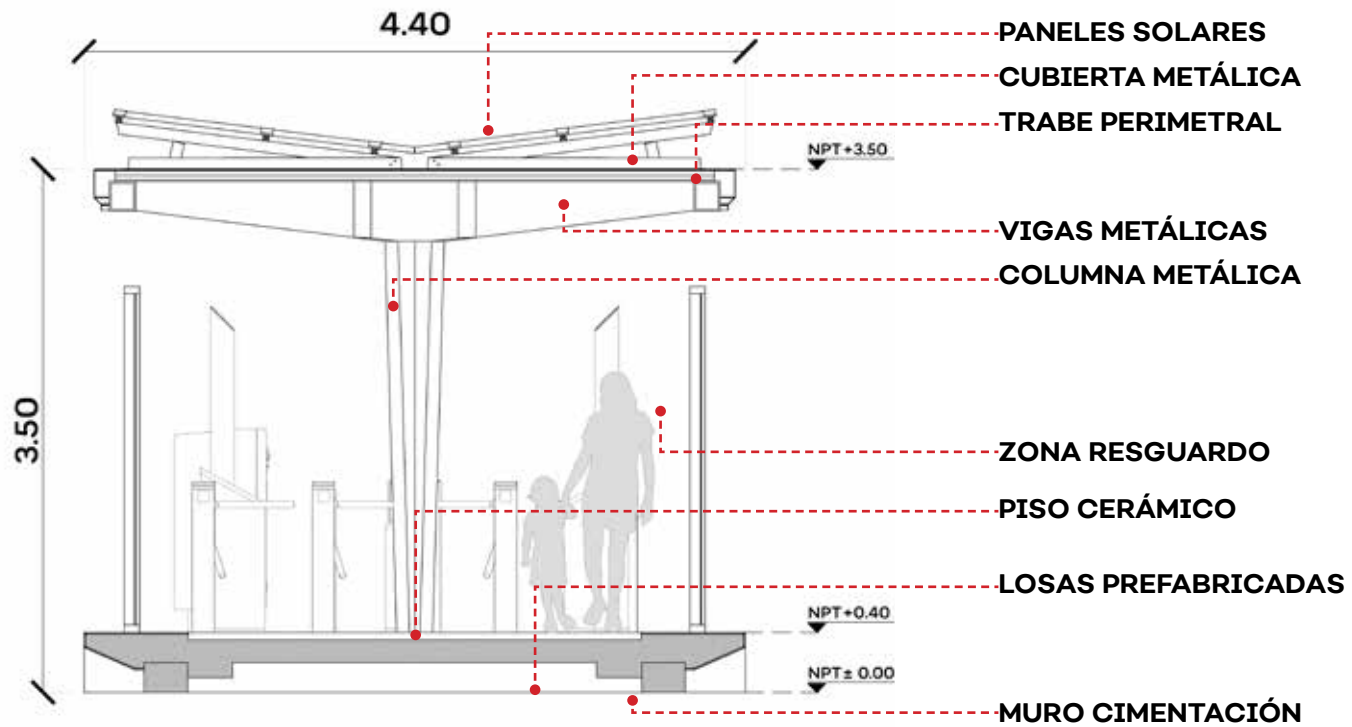
## ESTACIÓN TIPO



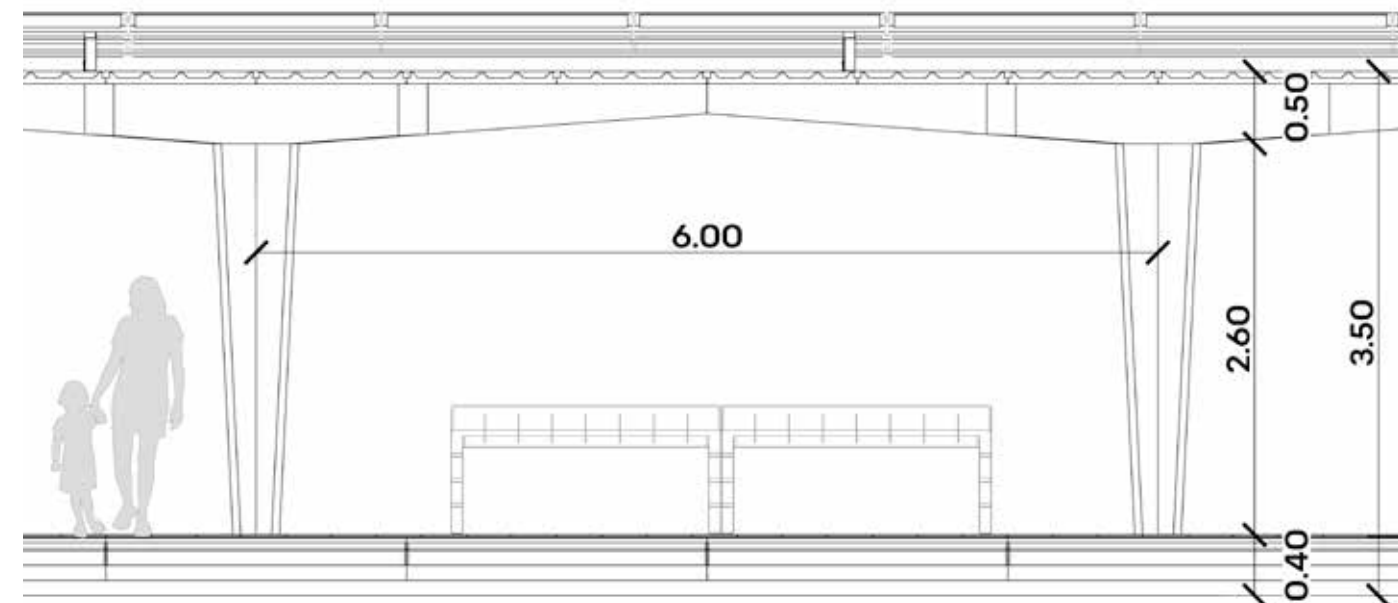
## PLANTA ARQUITECTÓNICA



## SECCIÓN LONGITUDINAL



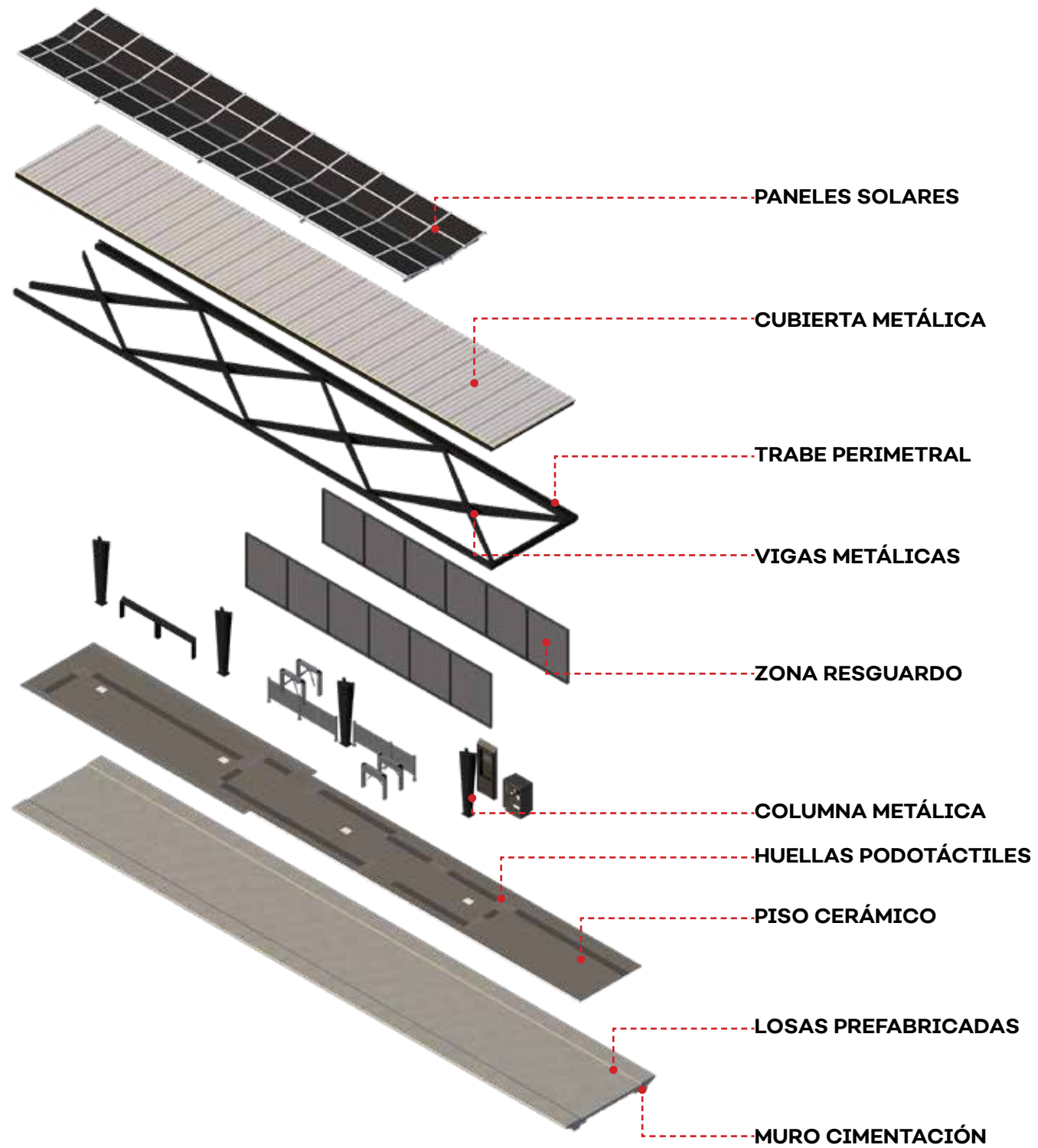
## SECCIÓN TRANSVERSAL



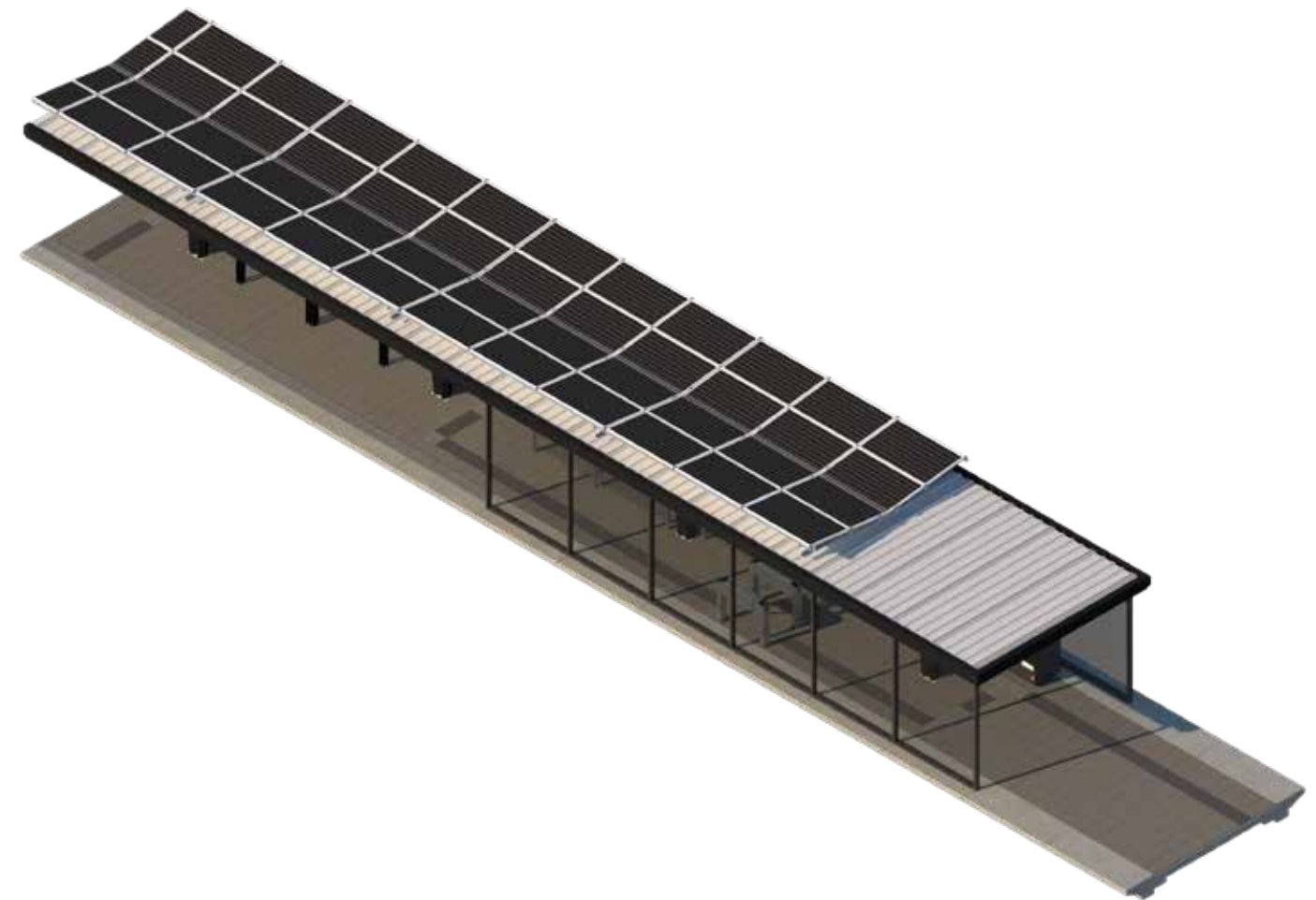
## SECCIÓN LONGITUDINAL



## ESTACIÓN TIPO



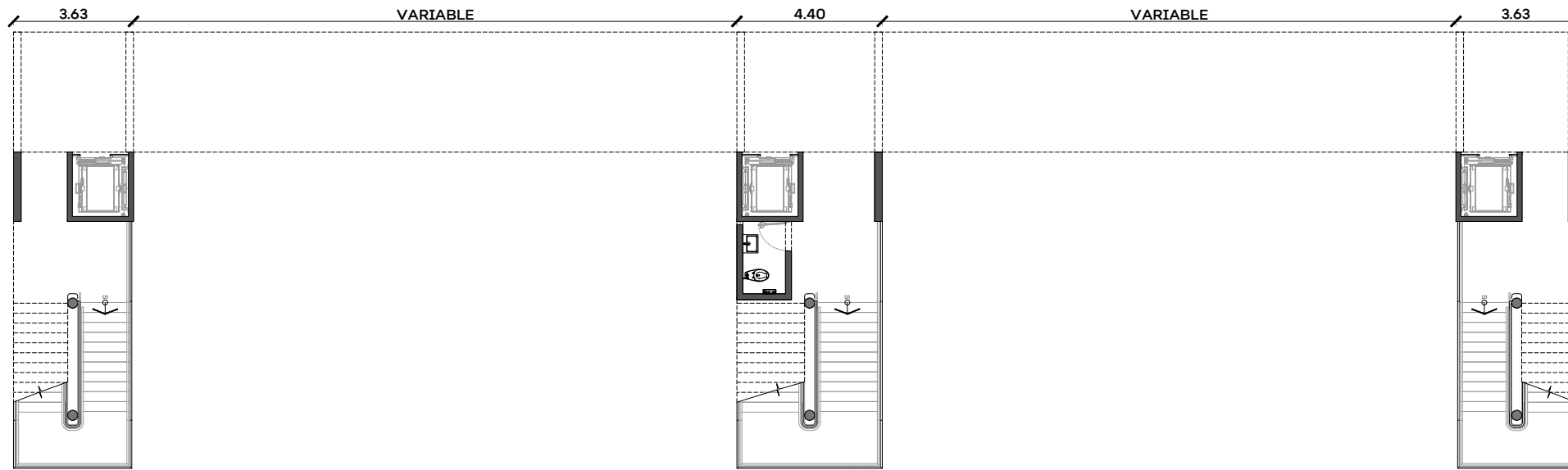
AXONOMÉTRICO



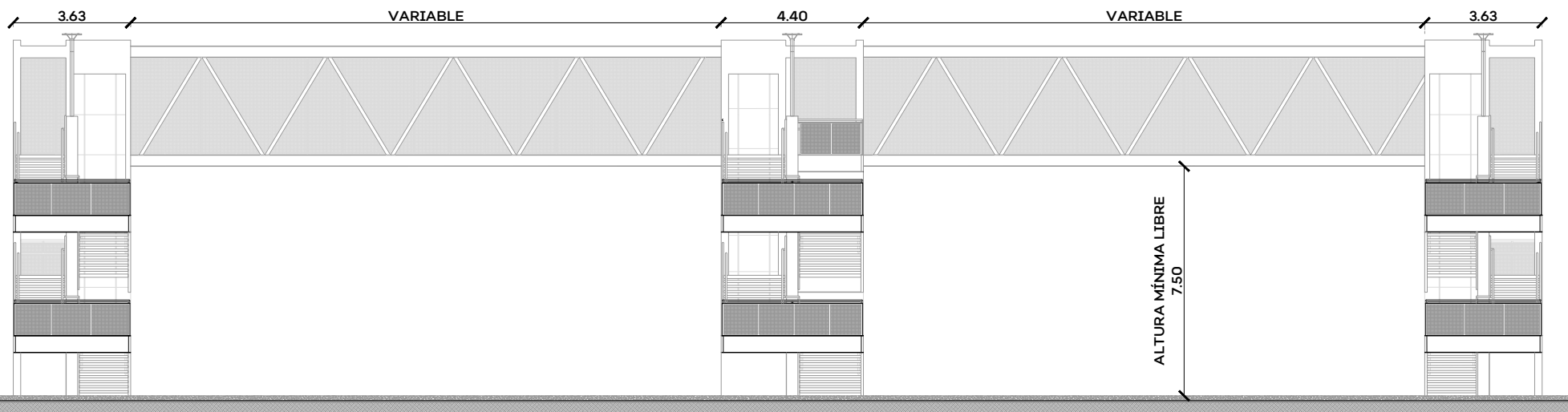
ISOMÉTRICO



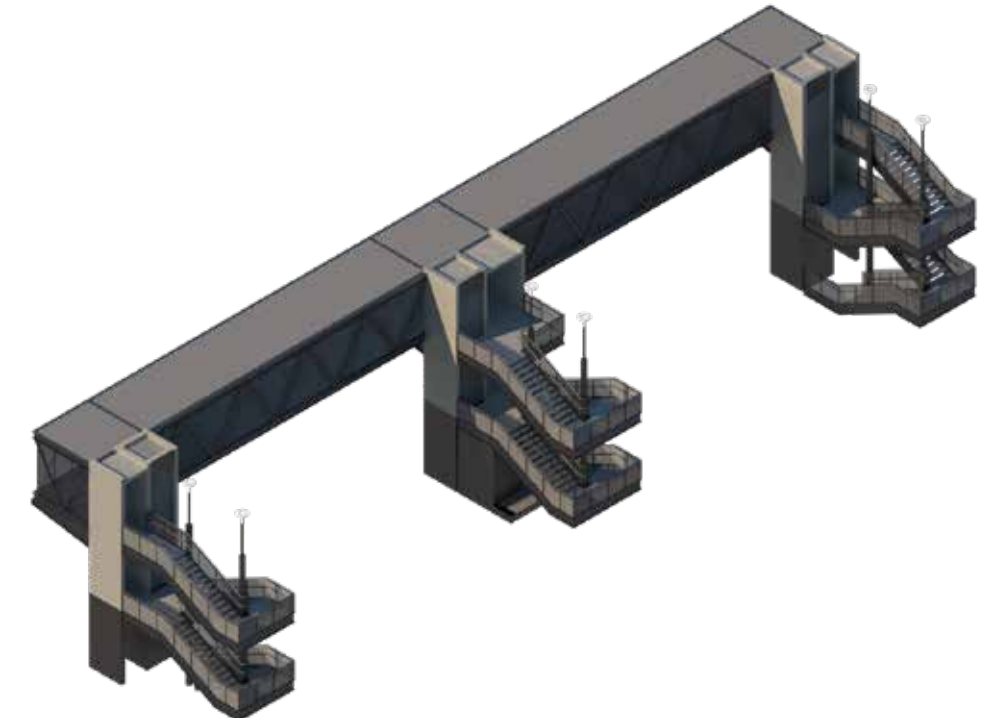
## PUENTE PEATONAL TIPO



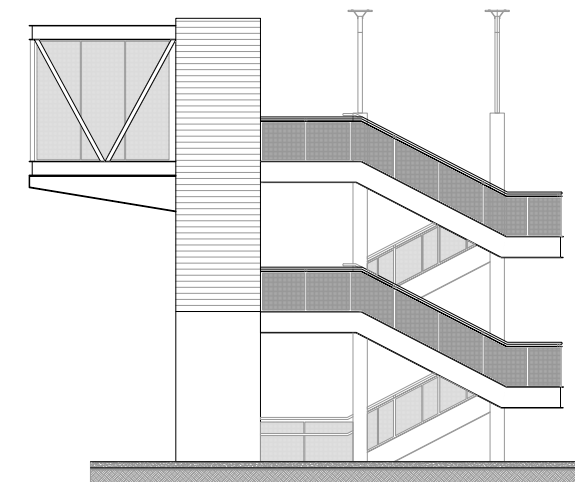
## PLANTA ARQUITECTÓNICA



## ALZADO FRONTAL



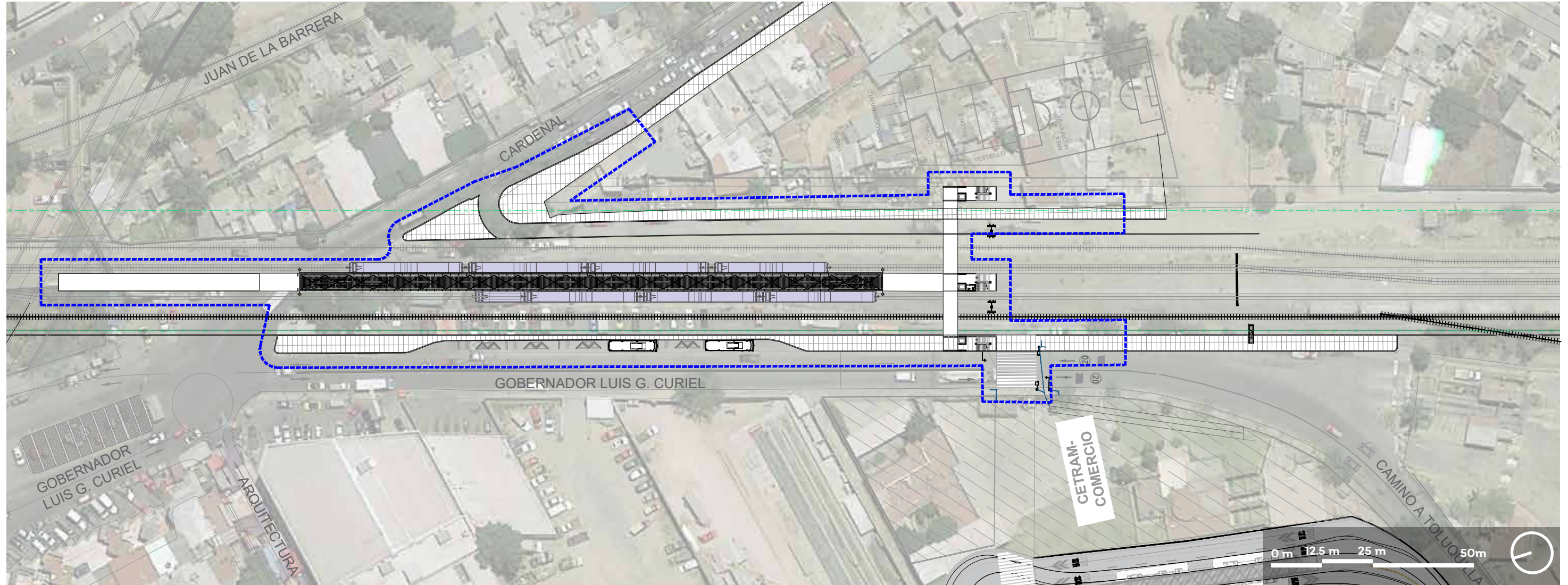
## ISOMÉTRICO



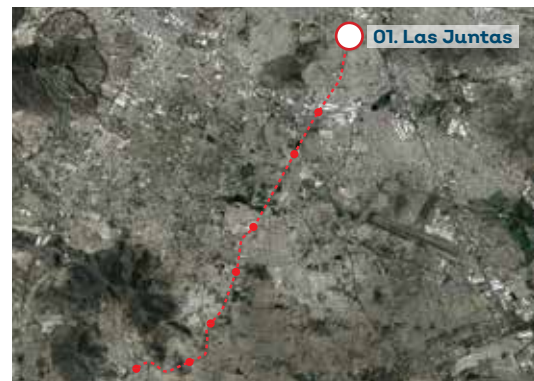
## ALZADO LATERAL



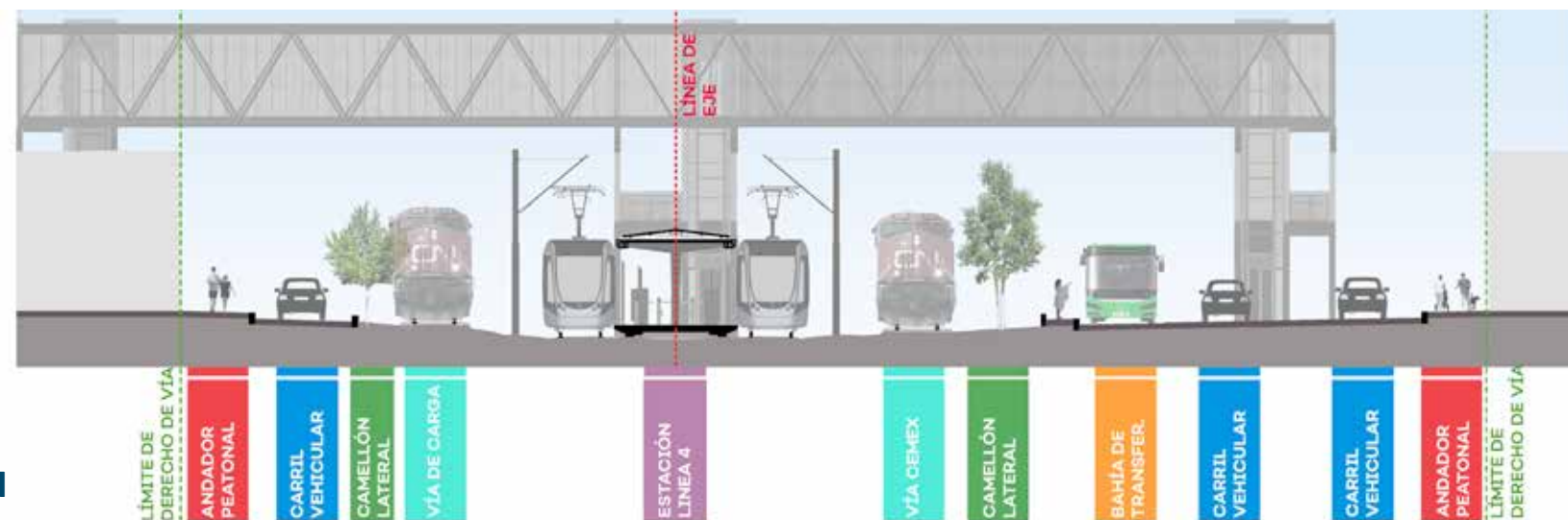
## ESTACIÓN 01. LAS JUNTAS



**PLANTA ARQUITECTÓNICA**



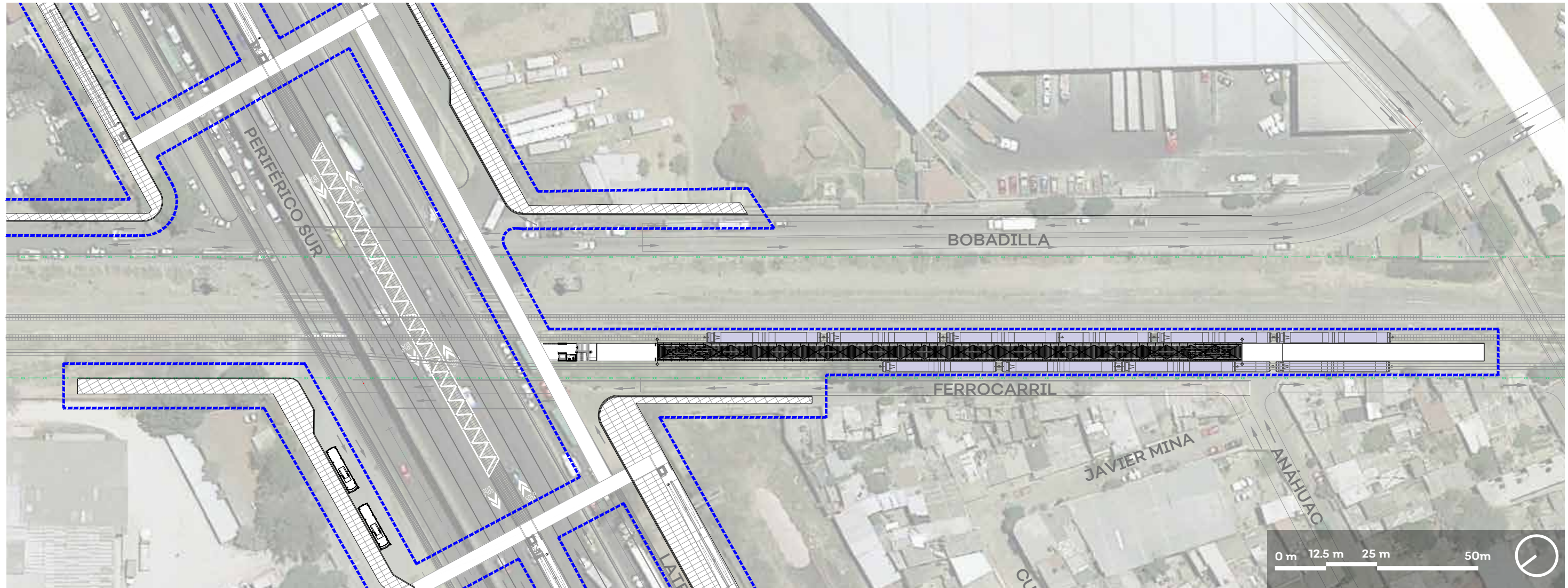
**UBICACIÓN**



**SECCIÓN**



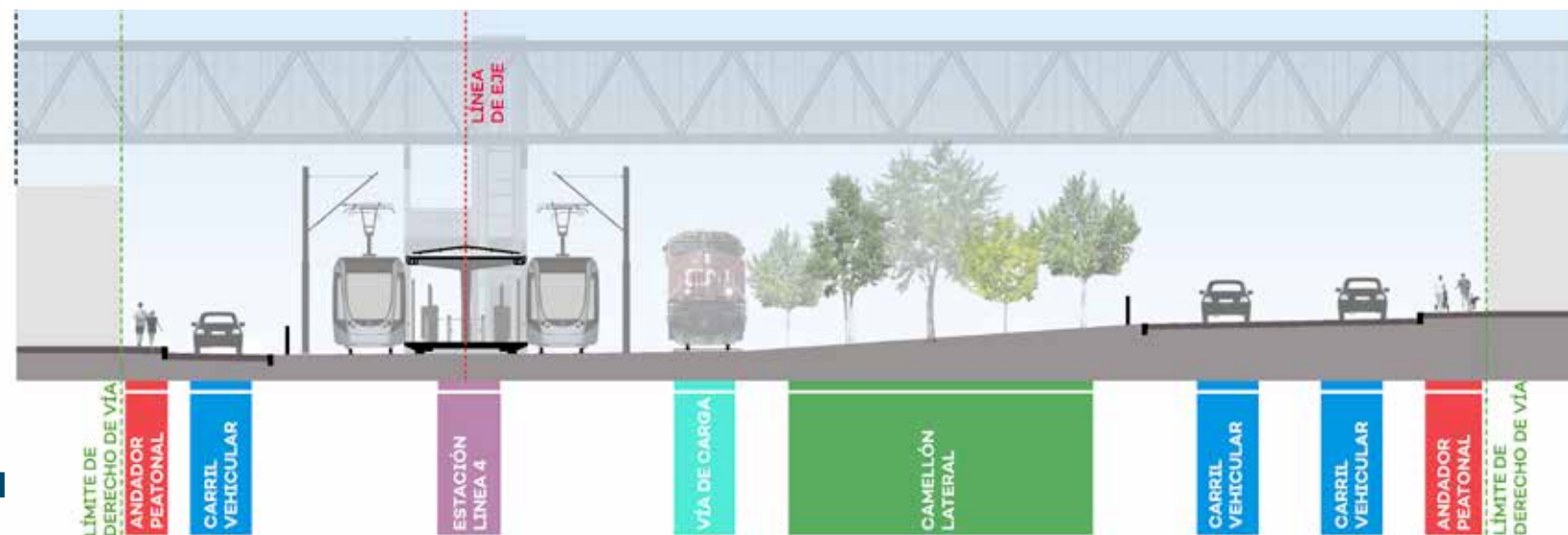
## ESTACIÓN 02. PERIFÉRICO SUR



PLANTA ARQUITECTÓNICA



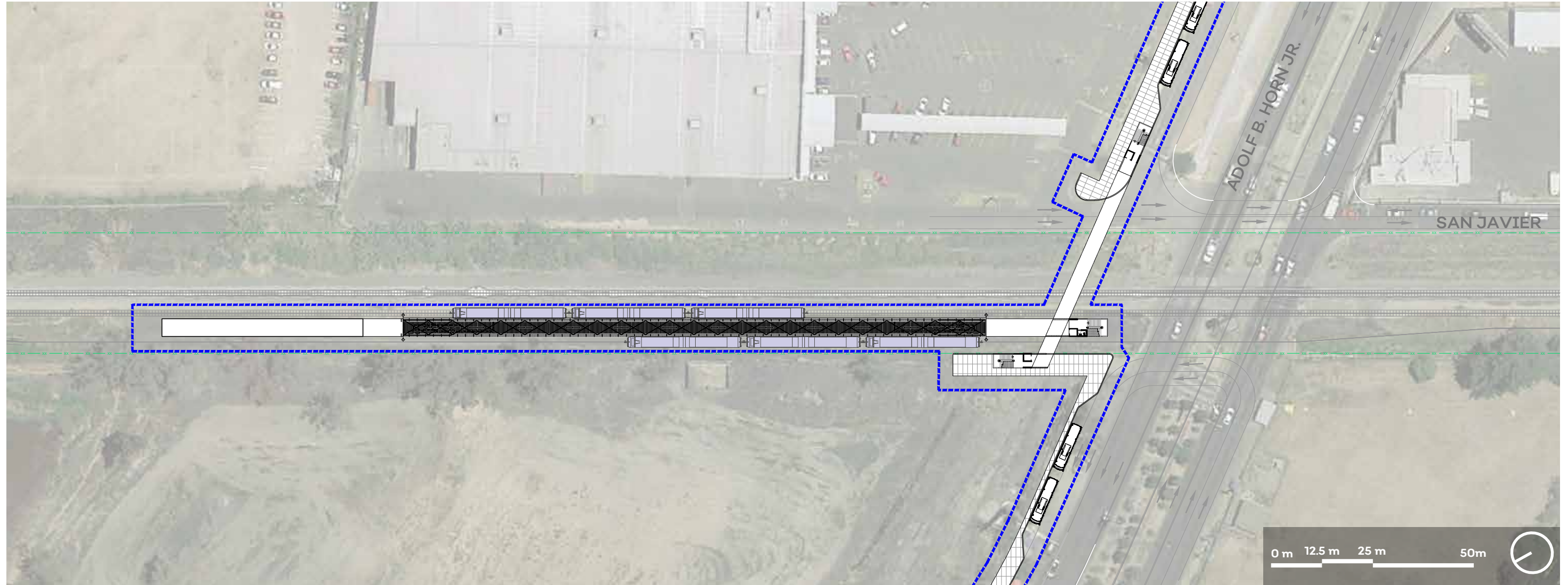
UBICACIÓN



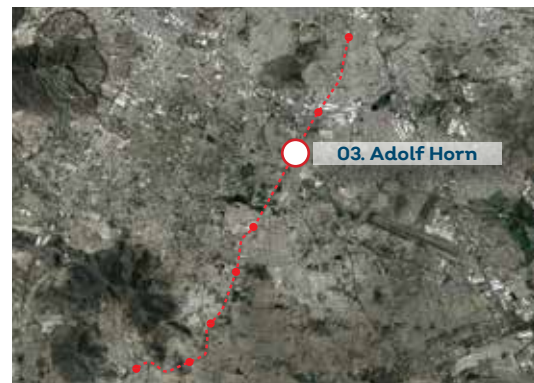
SECCIÓN



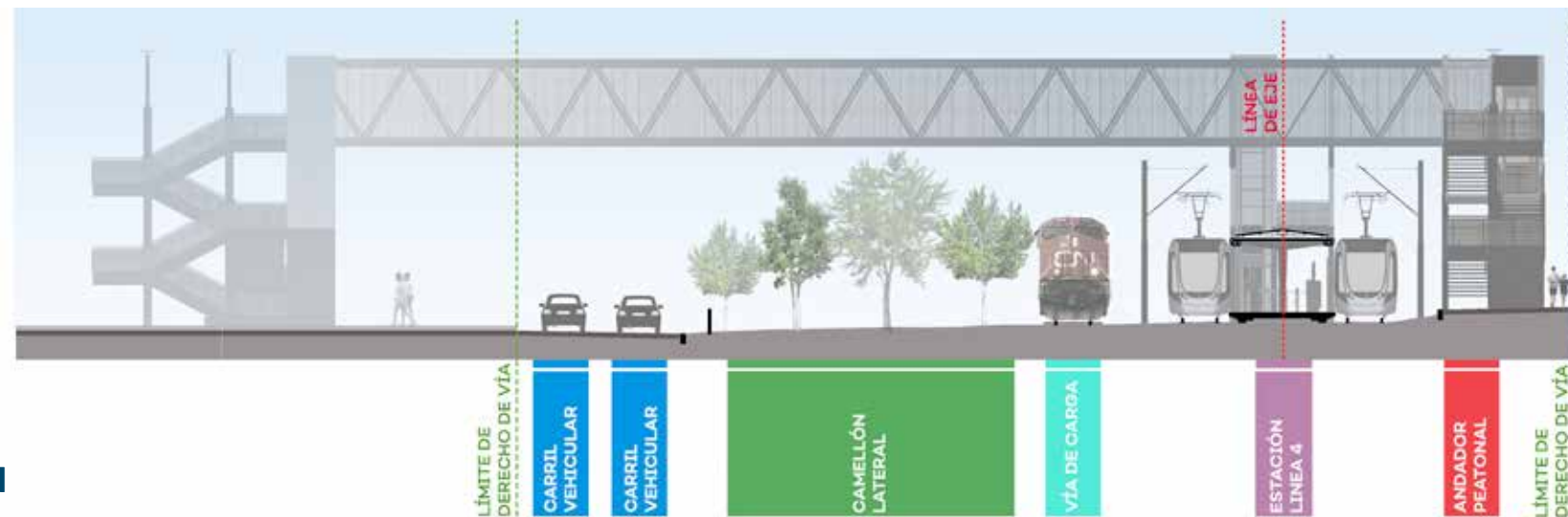
## ESTACIÓN 03. ADOLF HORN



PLANTA ARQUITECTÓNICA



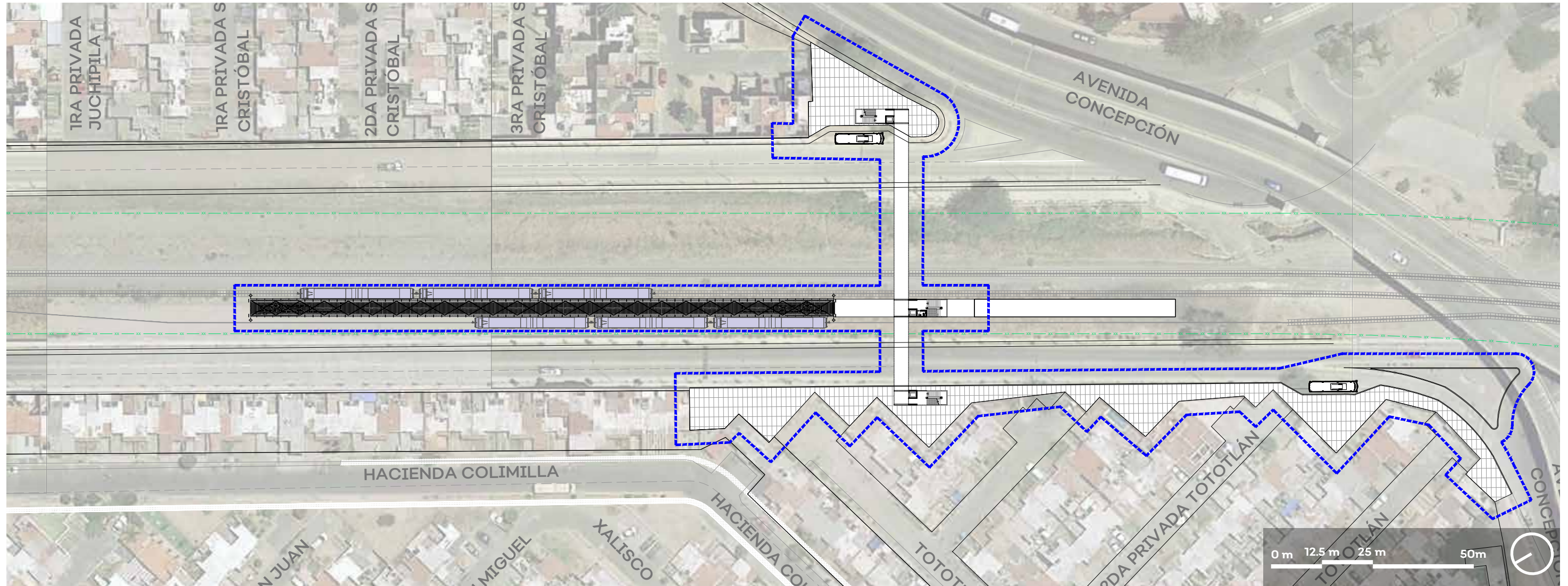
UBICACIÓN



SECCIÓN



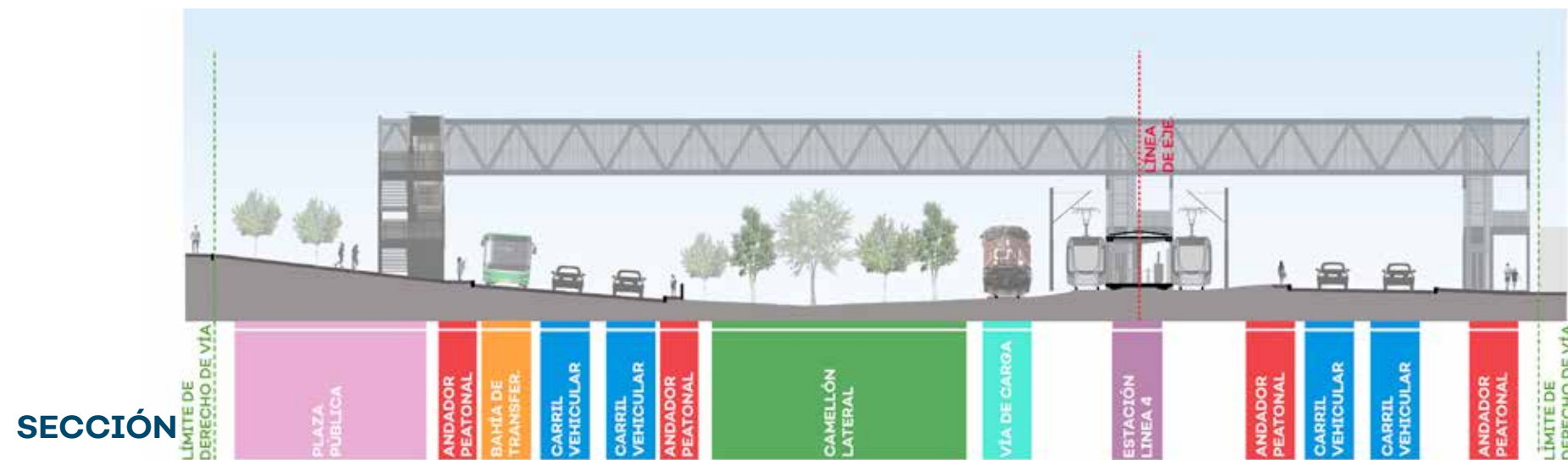
## ESTACIÓN 04. CONCEPCIÓN DEL VALLE



PLANTA ARQUITECTÓNICA



UBICACIÓN

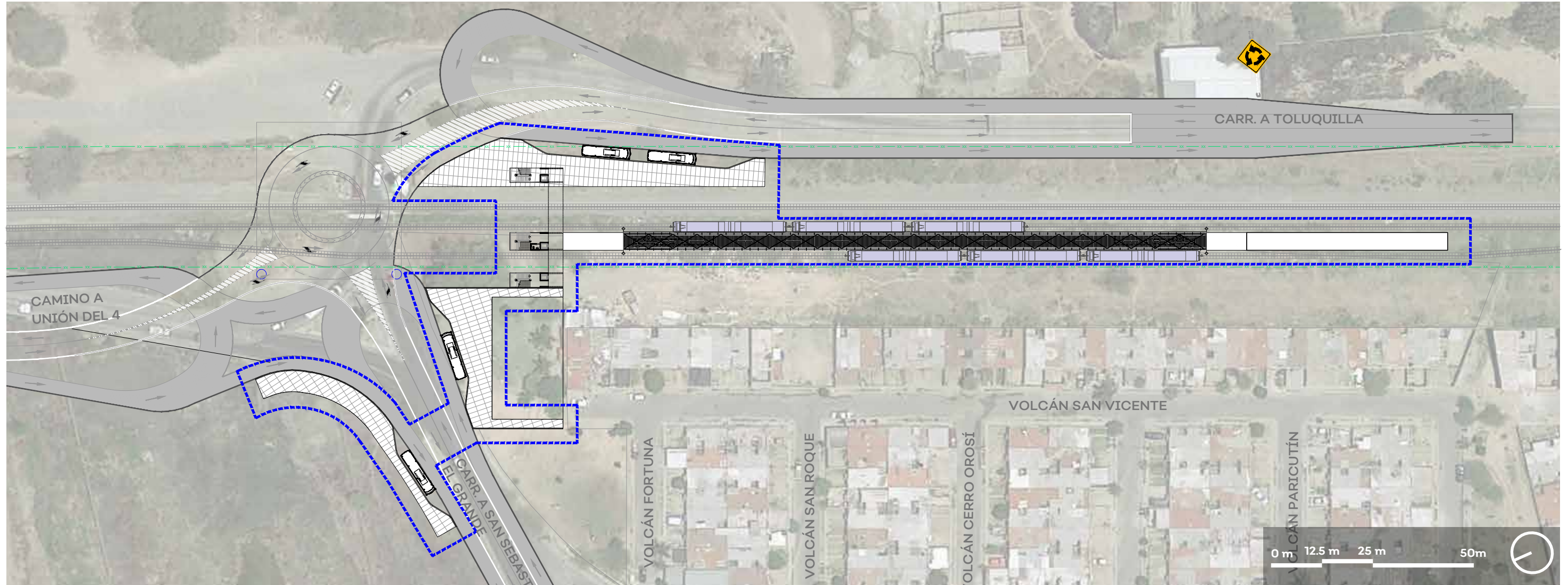


SECCIÓN

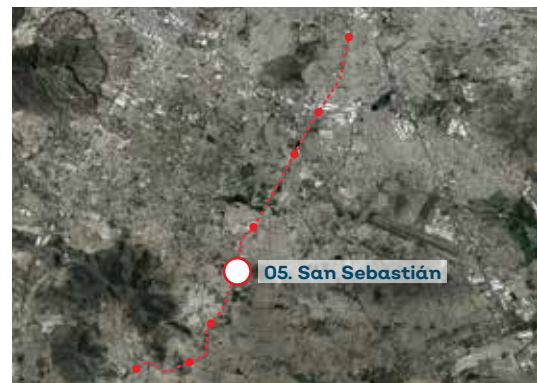




## ESTACIÓN 05. SAN SEBASTIÁN

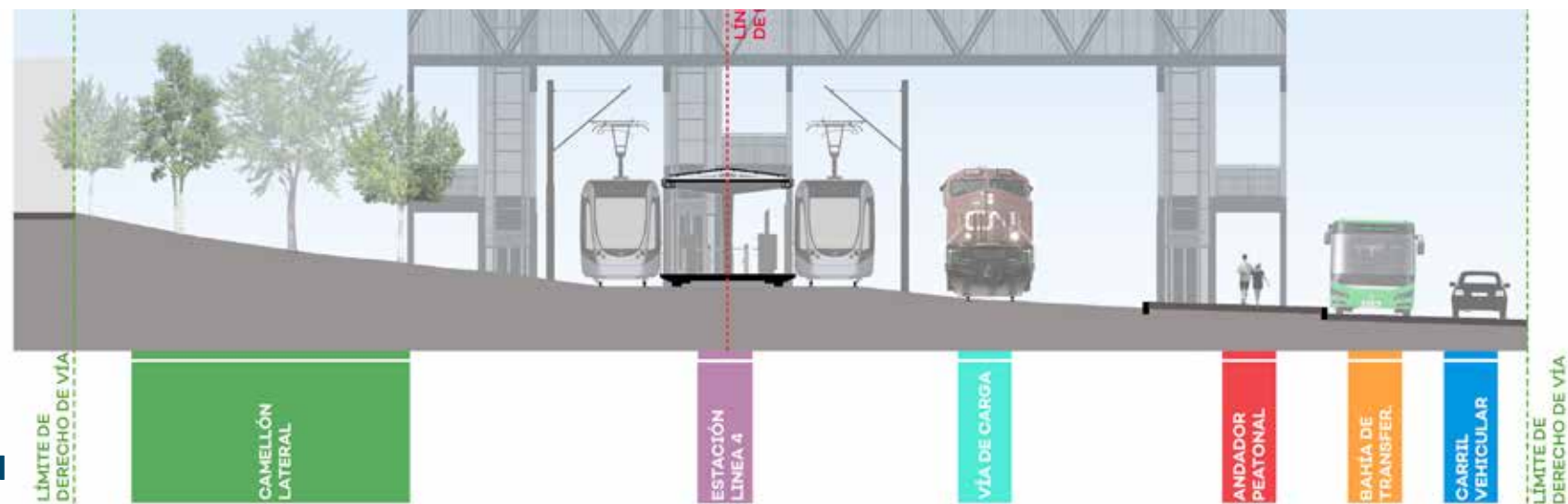


PLANTA ARQUITECTÓNICA



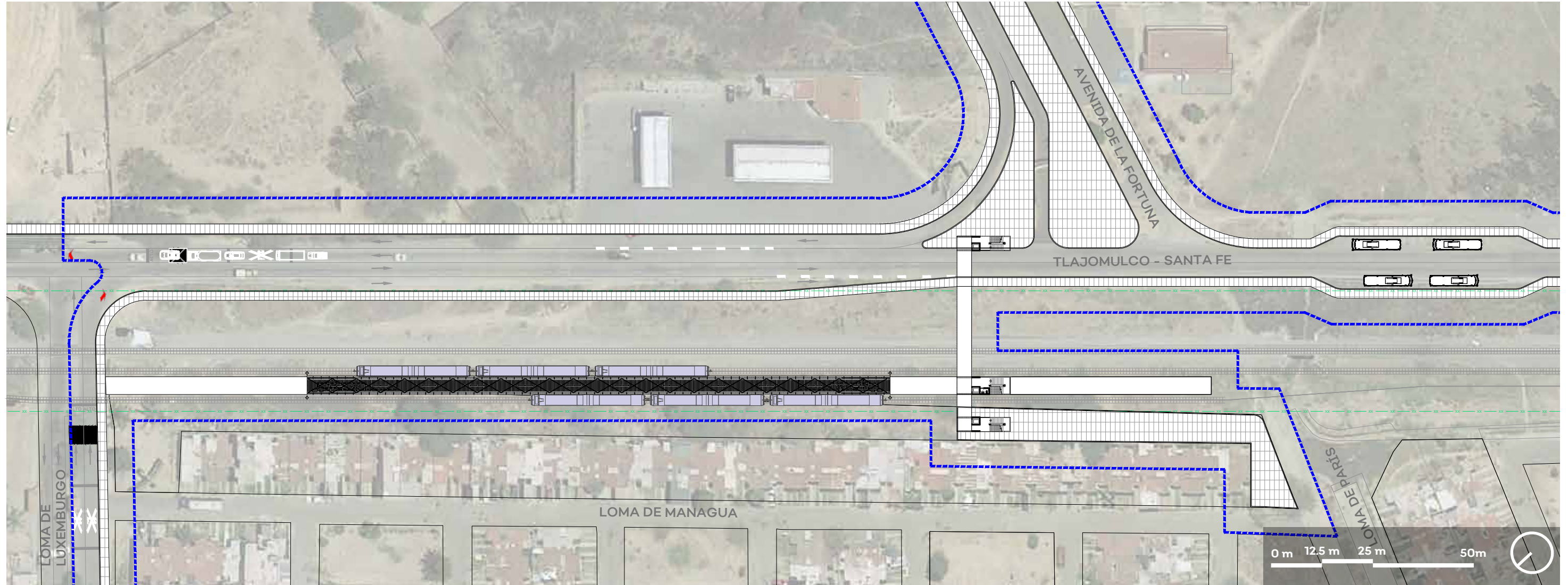
UBICACIÓN

SECCIÓN





## ESTACIÓN 06. LA FORTUNA



PLANTA ARQUITECTÓNICA



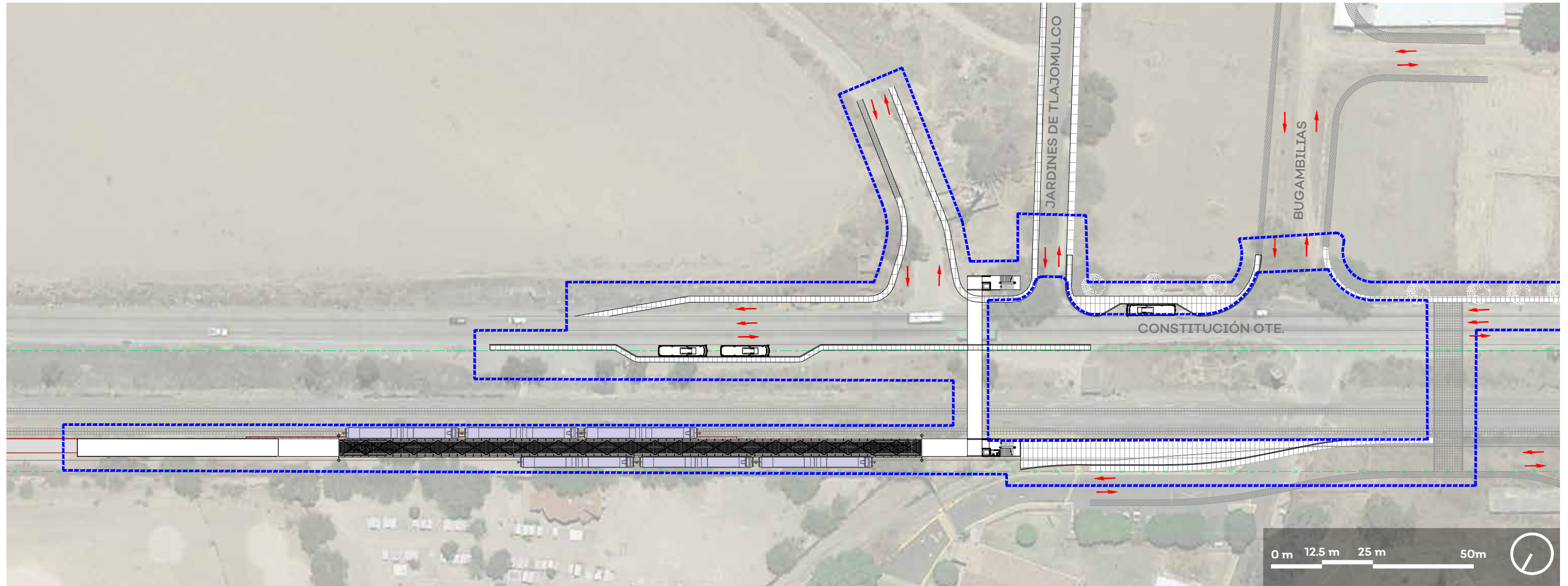
UBICACIÓN



SECCIÓN



## ESTACIÓN 07. CENTRO UNIVERSITARIO

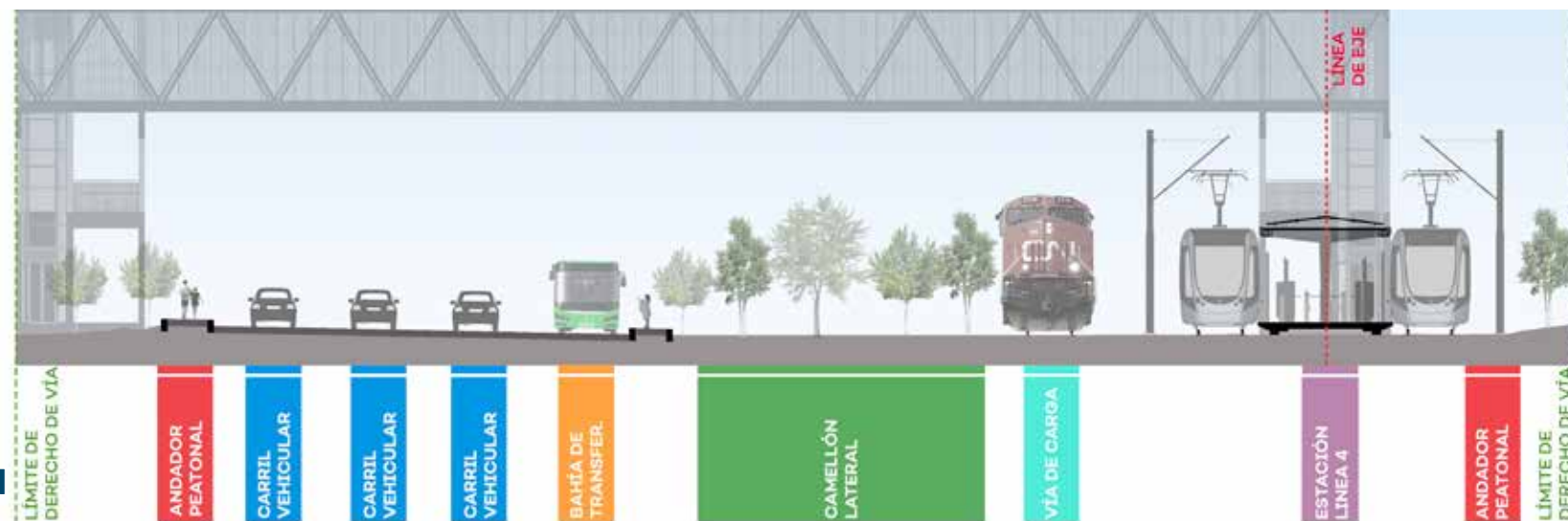


PLANTA ARQUITECTÓNICA



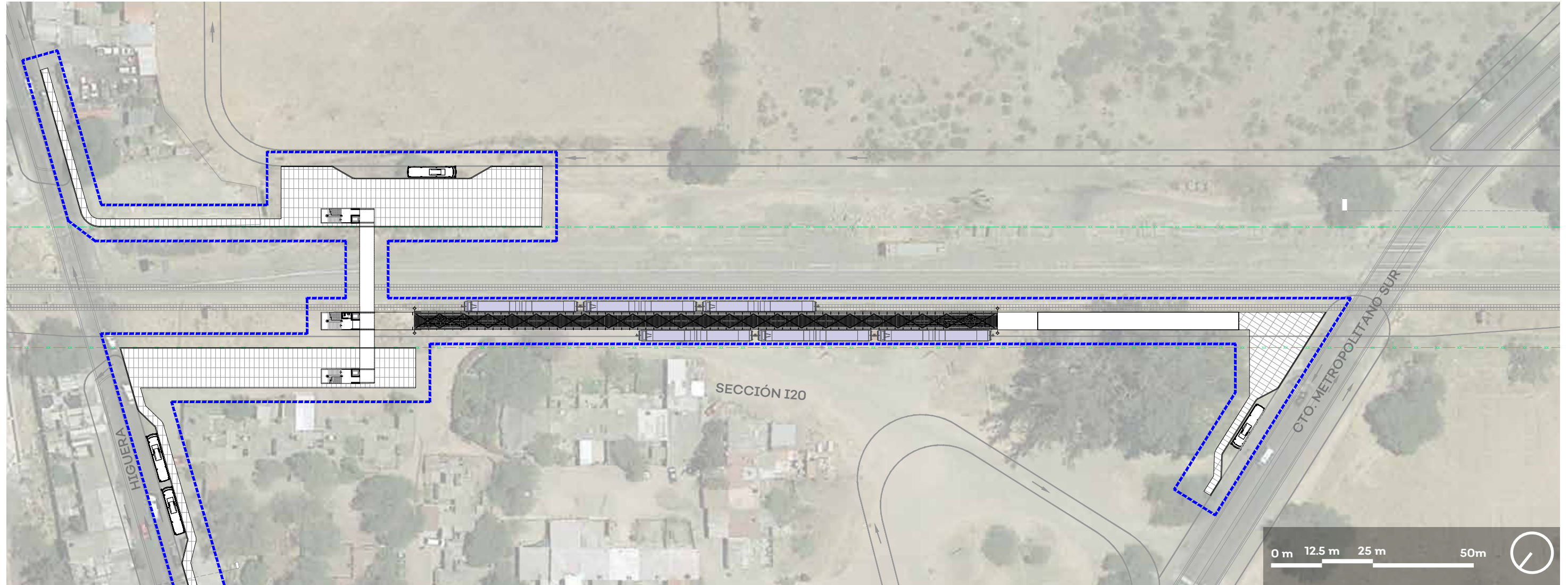
UBICACIÓN

SECCIÓN





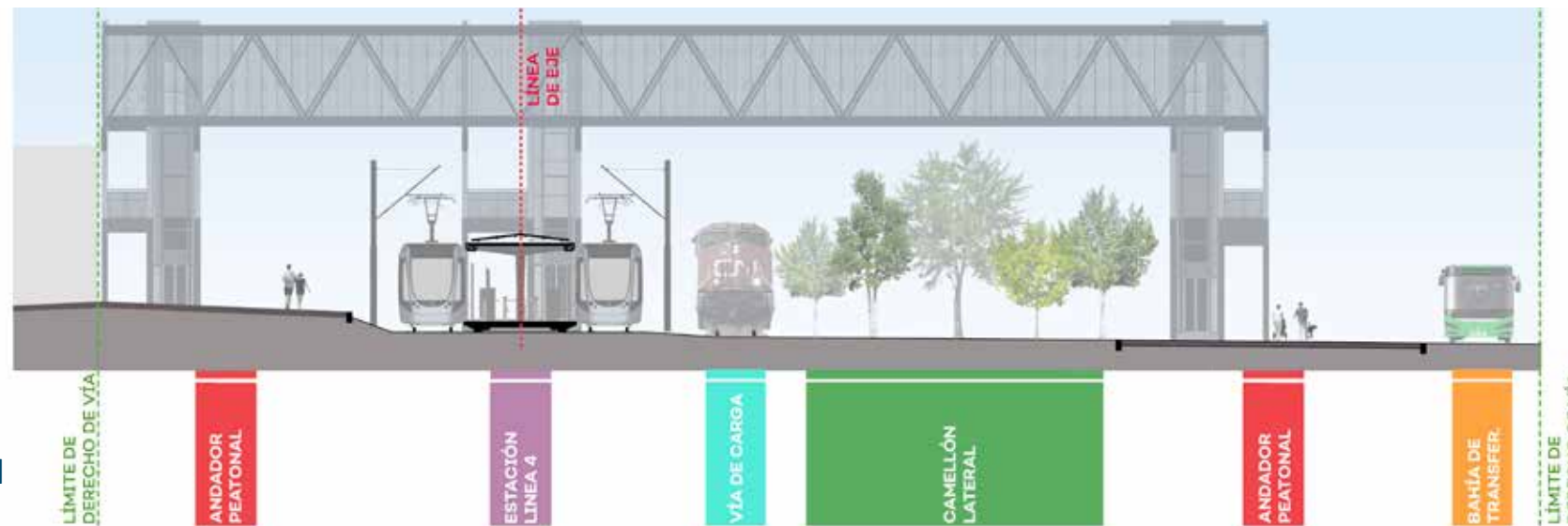
## ESTACIÓN 08. TLAJOMULCO CENTRO



PLANTA ARQUITECTÓNICA



UBICACIÓN



SECCIÓN





